

大流量/真空電磁閥 BF 系列

High Flow & Vacuum Solenoid Valve BF Series



- 工作母機中心出水系統
Central water coolant system of machine tool
- 大流量真空系統管路控制
Control of high flow vacuum system
- 高速動作代替球型閥
High speed to replace ball valve

產品規格 Specification

型號 Model	型式 Acting Type	牙口 Port	流通口徑 Orifice size(mm)	流量 Flow (L/min)	工作壓力 Working pressure(Bar)	最大真空度 Max. vacuum level(mmHg)
BF-3202-NC	常閉 NC	1/4"	6	1,500	2.5 - 8	—
BF-3202-NO	常開 NO				2.5 - 8	
VBF-3202-P	真空 Vacuum				—	
BF-3203-NC	常閉 NC	3/8"	12	2,000	2.5 - 8	—
BF-3203-NO	常開 NO				2.5 - 8	
VBF-3203-P	真空 Vacuum				—	
BF-3204-NC	常閉 NC	1/2"	20	4,000	2.5 - 8	—
BF-3204-NO	常開 NO				2.5 - 8	
VBF-3204-P	真空 Vacuum				—	
BF-3206-NC	常閉 NC	3/4"	20	5,000	2.5 - 8	—
BF-3206-NO	常開 NO				2.5 - 8	
VBF-3206-P	真空 Vacuum				—	
BF-3210-NC	常閉 NC	1"	25	8,500	2.5 - 8	—
BF-3210-NO	常開 NO				2.5 - 8	
VBF-3210-P	真空 Vacuum				—	

*用於真空應用需要一個 2bar 以上的外部引導壓力

In vacuum application, it is necessary to apply an external positive pilot pressure above 2 bar.



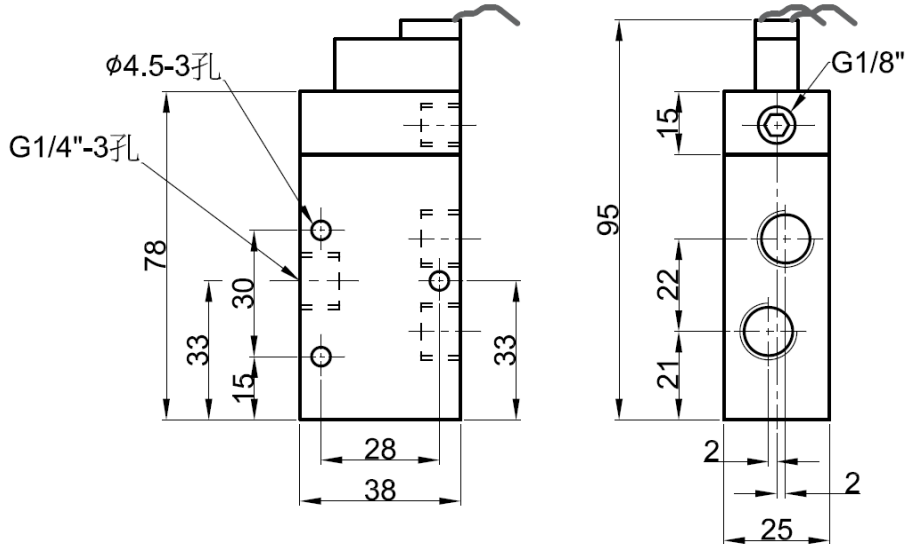
大流量/真空電磁閥 BF 系列

High Flow & Vacuum Solenoid Valve BF Series



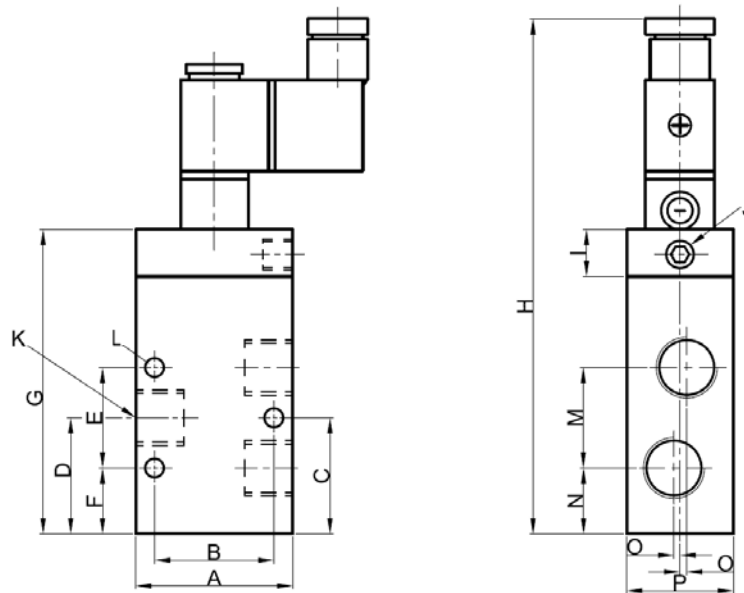
外觀尺寸 Overall Dimension

> BF-3202



外觀尺寸 Overall Dimension

> BF-3203~BF-3210



K	A	B	C	D	E	F	G	H	I	J	L	M	N	O	P
3-G 3/8"	50	38	37	37	32	21	97	145	15	G1/8	3-φ6.5	32	21	2	34
3-G 1/2"	70	50	44	44.5	40	24.5	117	165	15	G1/8	3-φ6.5	42	23	2.5	40
3-G 3/4"	70	50	44	44.5	40	24.5	117	165	15	G1/8	3-φ6.5	42	23	2.5	40
3-G 1"	100	80	57	57	60	27	155	222	15	G1/8	3-φ6.5	60	27	4	60



Kao Lu Enterprises Co., Ltd. TEL:886-4-24874219 · 24860626
Genn Dih Enterprises Co., Ltd. FAX:886-4-24864269 · 24862824
Web:www.genndih.com E-mail:genndih@ms43.hinet.net
No. 17, Lane 822, Sec. 2, Zhongxing Rd., Dail Dist., Taichung City 41244, Taiwan(R.O.C)