

氣缸式夾管閥 Cylinder Pinch Valve

CPV Series



產品特色 Features



- 可搭配氣壓缸設定常開或常閉狀態
N.O or N.C selection available
- 提供黑色陽極氧化鋁外體
Black anodized aluminum
- 保固期12個月
12 months warranty
- 使用鉑金硫化矽膠編織管
Platinum silicone, Braid Reinforced Hoses
- 溫度範圍 -60~180°C (-76°F ~ 356°F)
Temperature range: -60~180°C
- 符合美國FDA 177.2600認證
FDA 21 CFR 177.2600
- 符合美國藥典
U.S. Pharmacopoeia Class VI

夾管閥又稱管夾閥，作用是透過夾壓橡膠管來做開啟或關閉流路，也有比例式可階段調控等選擇。夾管閥主體並不會接觸到使用中的介質，可確保經過的液體或氣體不受到污染，且能保持夾管閥的清潔。因此適合作為生物、食品工業、劑量系統、血液處理/分析、實驗室分析、沖洗程序須無菌的生物製等設備。這是針對需要液體或氣體控制且不讓介質受到污染的產業所開發的產品。

汽缸式夾管閥有一個方便的卡入式管槽，用於快速裝卸工作，也可搭配電磁閥設定為常開或常閉狀態，透過氣動的方式，提供更強的夾持力，適用於硬度更高或直徑更大的管路上。

本產品皆符合 、、、 等認證。

Cylinder pinch valve is also known as pneumatic pinch valve, as it requires external pneumatic supply to support its function. It is commonly used to open or close a fluid path through pinching and squeezing the plastic flexible tube. There is also an option with proportionally controlling the distance in which the tube is squeezed which indirectly controls the flow rate.

The advantage of using a pinch valve is that it has no contact with the fluid, making it an ideal option for biotechnology processing, food industry, dosing system, blood process/analytical, CIP and SIP process, and biopharmaceutical equipment. Pneumatic pinch valve relies on the amount of external pneumatic pressure supplied to pinch the tube, and thus it provides a higher pinch force, making it suitable for tube with larger durometer or large outer diameter.

氣缸式夾管閥 Cylinder Pinch Valve



CPV Series

型號選擇 Order Number

| 型號 Model | 最小壁厚需求 Minimum Thickness (mm) | 管內徑 Tubing I.D (mm) | 管外徑 Tubing O.D (mm) | 材料 Material | 硬度 Durometer (Shore A) | 最大測試壓力 Maximum Pressure (bar) |
|---------------|-------------------------------------|---------------------------|---------------------------|---------------------------------------|------------------------------|-------------------------------------|
| CPV-930-64 | 1.6 | 3.2 | 6.4 | Pharma80 | 80 | 6 |
| | | | | PU | 70-80 | |
| | | | | PVC | 60-70 | |
| CPV-931-80 | 1.2 | 5.6 | 8 | PU | 70-80 | 6 |
| | | | | PVC | 60-70 | |
| CPV-932-95 | 1.6 | 6.4 | 9.5 | Pharma80 | 80 | 6 |
| | | | | PVC | 60-70 | |
| CPV-933-12 | 1.6 | 9.5 | 12.7 | Pharma50 | 50 | 6 |
| | | | | PU | 70-85 | |
| CPV-934-15-NC | 3.2 | 9.52 | 15.87 | 矽膠編織管 Silicon, Braid Reinforced | 65 | 6 |
| CPV-934-15-NO | 3.2 | 9.52 | 15.87 | 矽膠編織管 Silicon, Braid Reinforced | 65 | |
| CPV-934-19 | 3.2 | 12.7 | 19.1 | 矽膠編織管 Silicon, Braid Reinforced | 65 | |
| CPV-934-20 | 3.8 | 12.7 | 20.3 | 矽膠編織管 Silicon, Braid Reinforced | 65 | |
| CPV-935-25 | 3.2 | 15.9 | 25.4 | 矽膠編織管 Silicon, Braid Reinforced | 60-65 | 6 |
| CPV-935-28-NC | 4.5 | 19 | 28 | 矽膠編織管 Silicon, Braid Reinforced | 60-65 | |
| CPV-935-28-NO | 4.5 | 19 | 28 | 矽膠編織管 Silicon, Braid Reinforced | 60-65 | |
| CPV-936-35 | 4.8 | 25.4 | 35 | PVC | 60 | 6 |

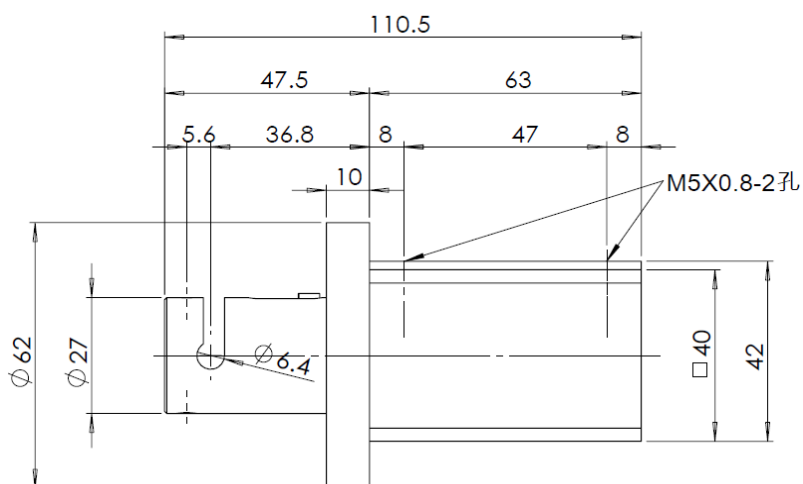
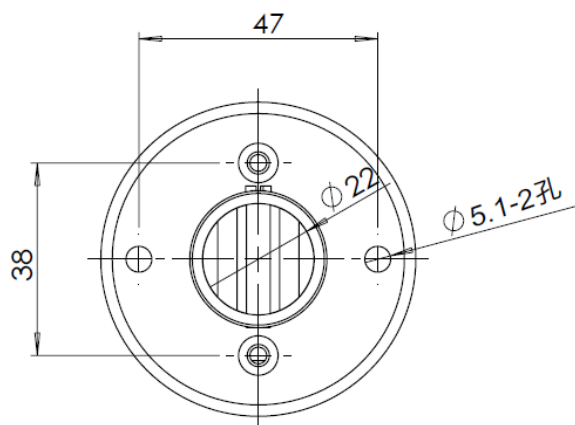
氣缸式夾管閥 Cylinder Pinch Valve



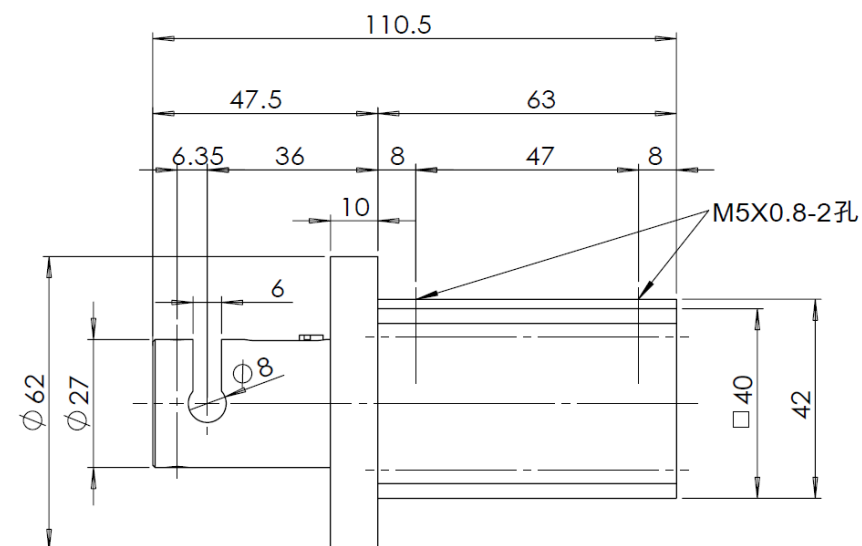
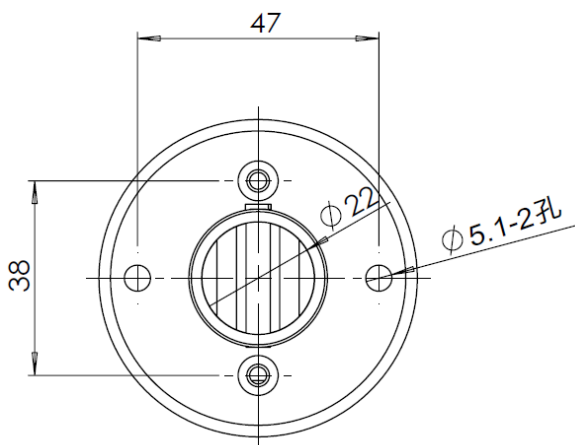
CPV Series

外觀尺寸 Dimensions

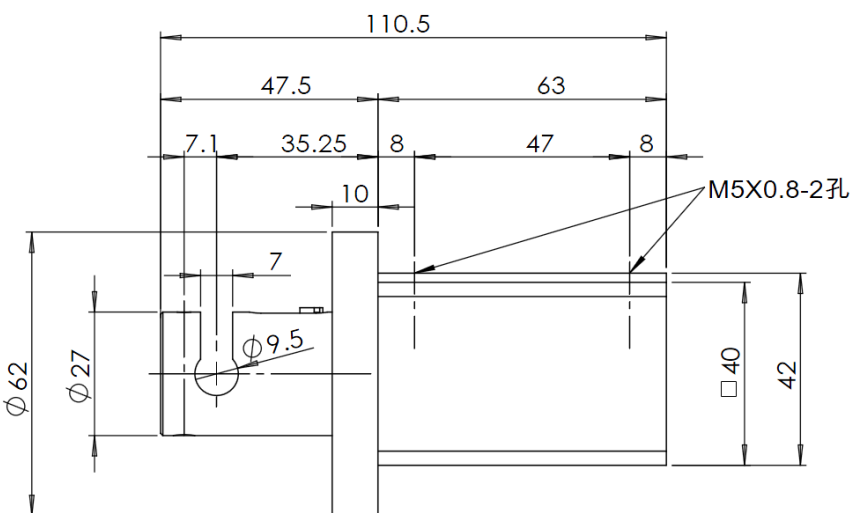
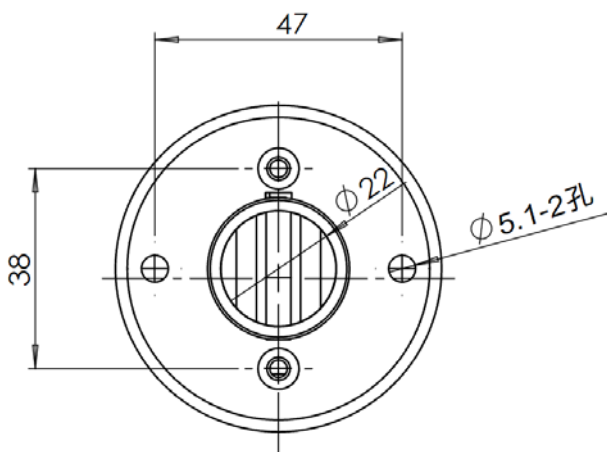
◆ CPV-930-64



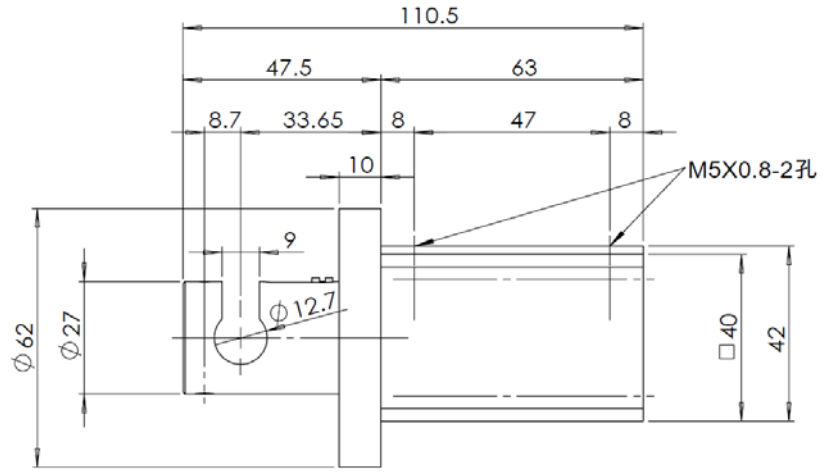
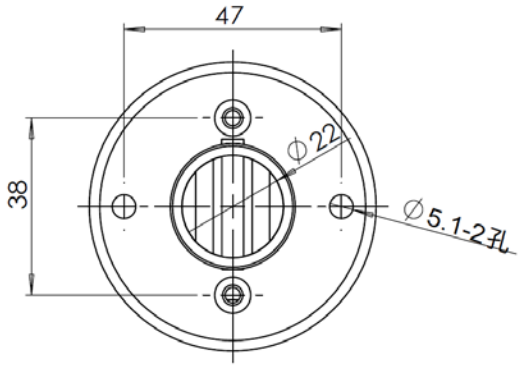
◆ CPV-931-80



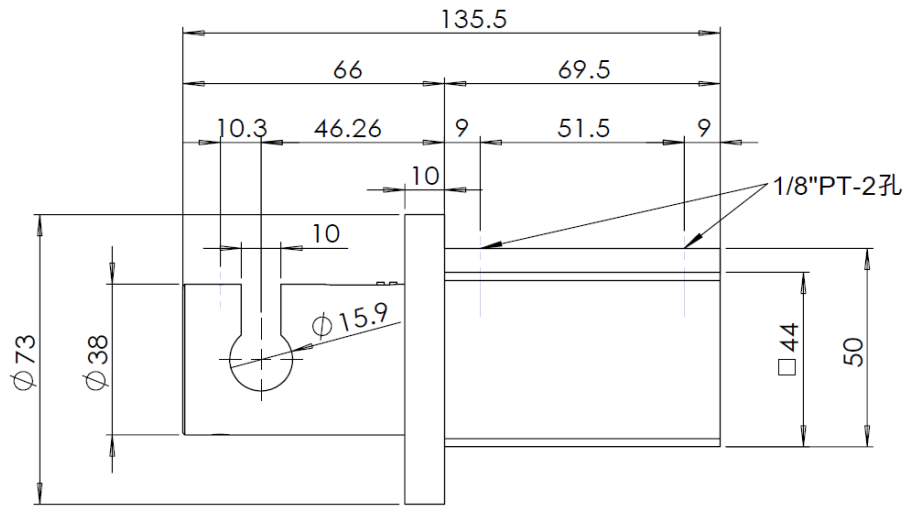
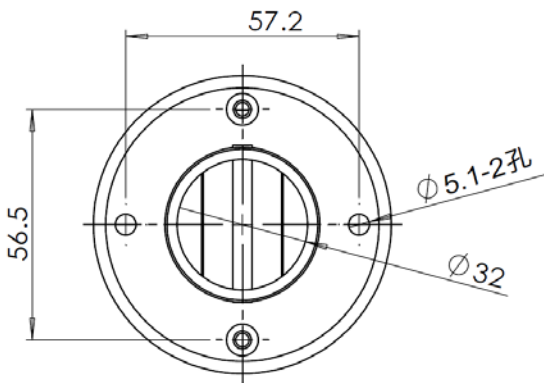
◆ CPV-932-95



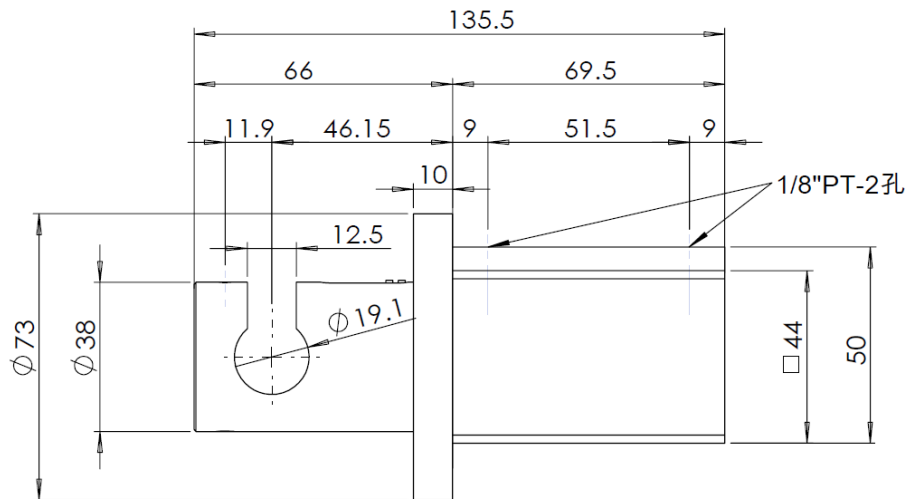
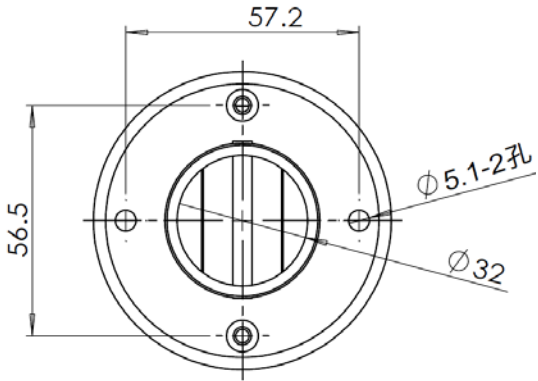
◆ CPV-933-12



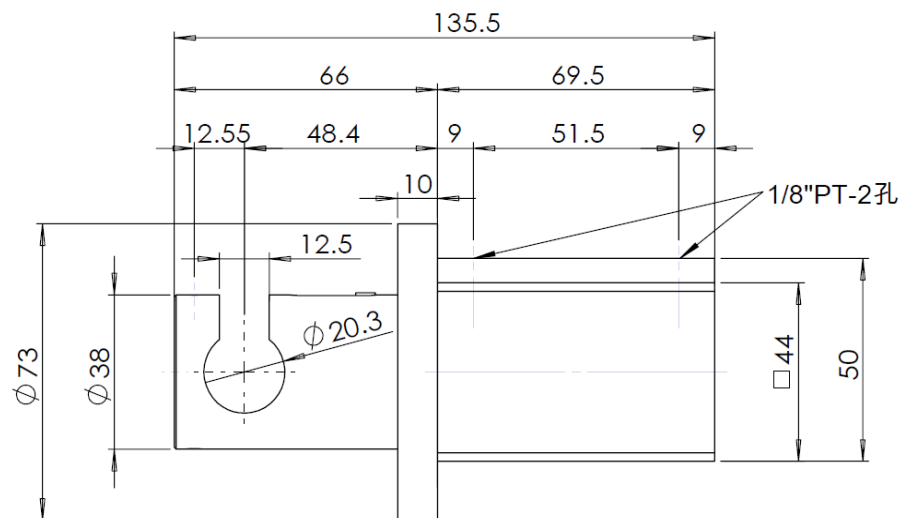
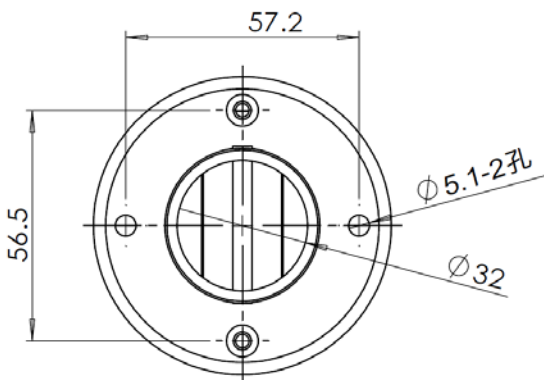
◆ CPV-934-15



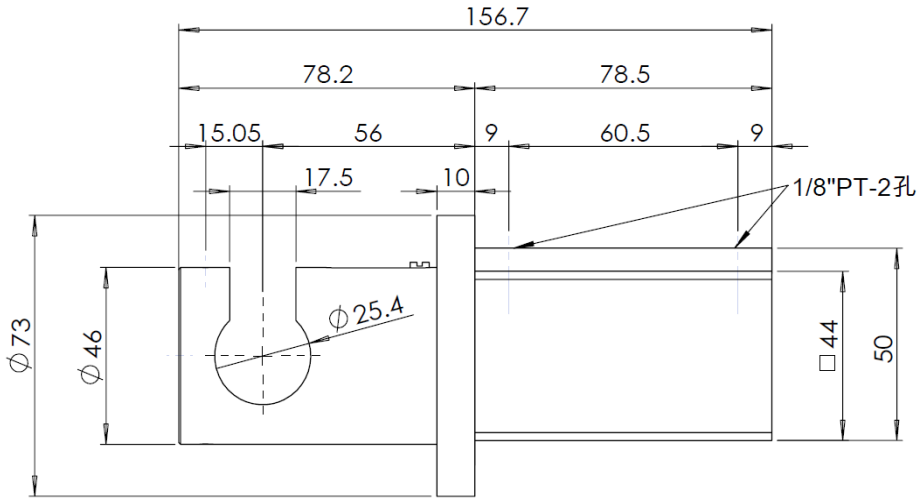
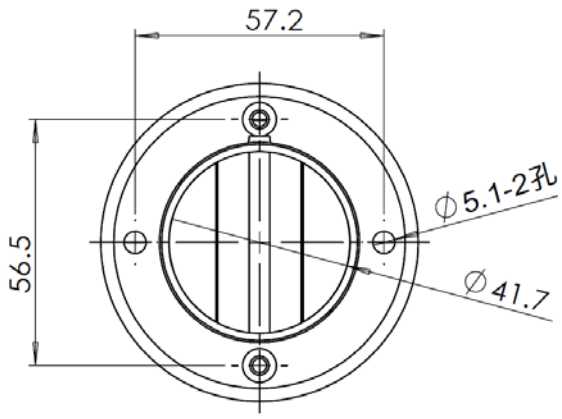
◆ CPV-934-19



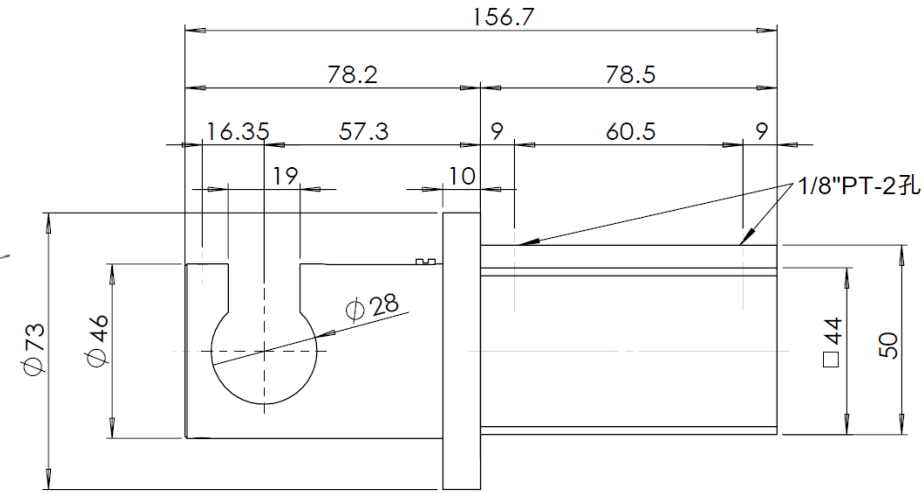
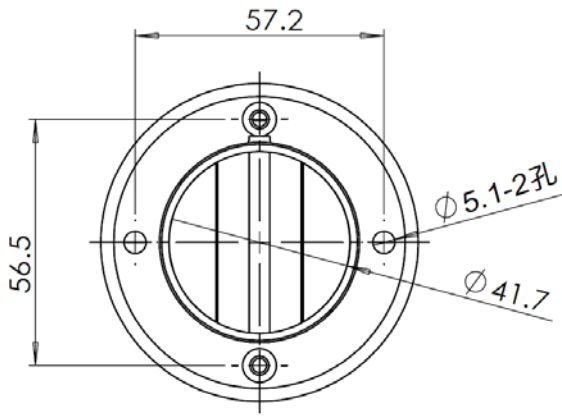
◆ CPV-934-20



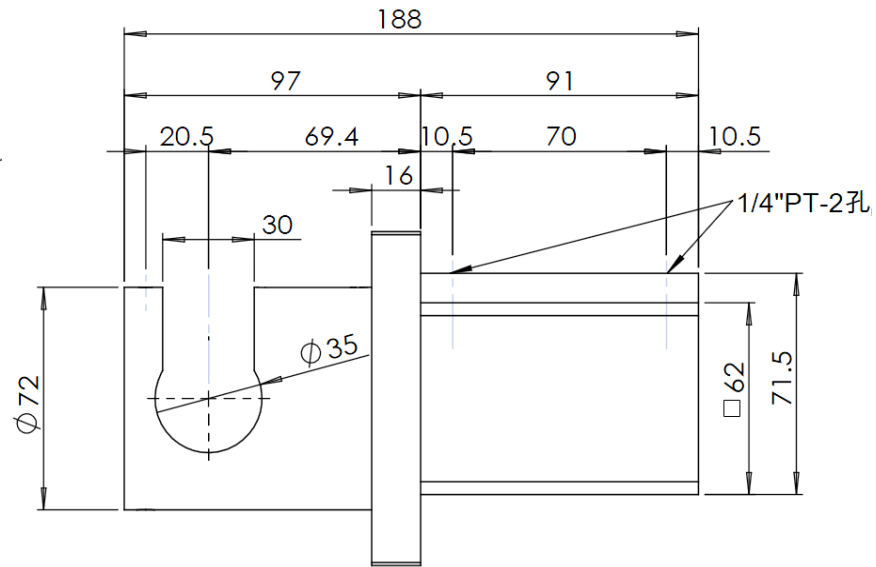
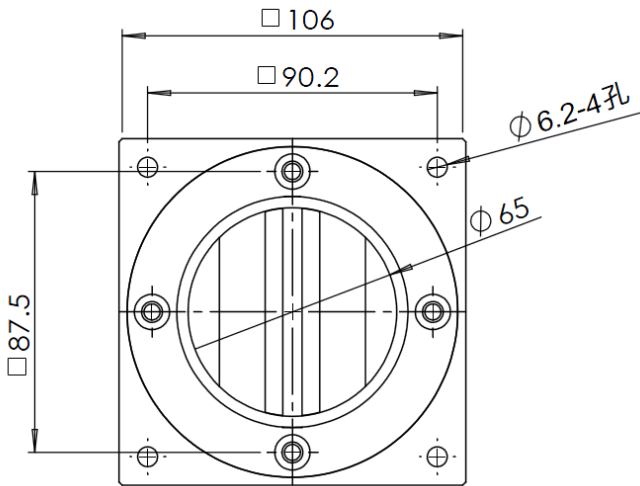
◆ CPV-935-25



◆ CPV-935-28



◆ CPV-936-35



夾管閥 Pinch Valve

All Series



各類夾管閥使用注意事項

1. 請勿在高腐蝕性氣體、化學、海水環境或附著上述物質的場所使用。
2. 請不要附加超過規格範圍以外的正負壓力，如果所加壓高於規範許可值，就會造成流體洩漏、噴出和爆炸。
3. 請定期保養更換管材，防止管材破裂造成意外。
4. 為防止線圈被燒壞，必須按照規格所記載的電氣特性和溫度範圍使用，此外連續通電後線圈表面會出現高溫狀態，請不要用手觸摸。
5. 本產品不宜受日光照射或雨淋場合，請用保護罩等遮蔽保護。
6. 如果自行將產品拆解、再組裝或改造等行為，都將使保固無效。
7. 本產品不能用作緊急關閉裝置。應在系統中安裝安全系統，以防止嚴重傷害或生命損失。

保固

自出廠起 12 個月以內為保固期限，請務必遵守使用注意事項。
因人為因素使用不當造成的產品不良，則本公司對本保修不承擔任何責任。

Precautions for use

1. Do not operate in locations having an atmosphere of corrosive gases, chemicals, sea water, or where there will be contact with the same.
2. Do not apply higher than the allowable operating pressure in the tube, this will result in fluid leakage or tube burst.
3. It is advised to replace the tube from time to time to avoid tube bursting.
4. To avoid damaging the solenoid in solenoid-operated pinch valve, do not apply higher than designated power continuously. The coil may heat up and do not touch the coil with hands.
5. In locations which receive direct sunlight or raining, please provide a protective cover.
6. The product will be out of warranty period should the product be dis-assembled or re-assembled.
7. The product cannot be used as an emergency shut-off. The system should be installed with a safety device to prevent damage to the system.

Warranty

KaoLu Enterprise Co. Ltd. products are warranted to the original purchaser only against defects in material or workmanship for 6 months from the date of manufacture. The extent of KaoLu's liability under this warranty is limited to repair or replacement of the defective unit at KaoLu's option. KaoLu shall have no liability under this warranty where improper installation or filtration occurred.