

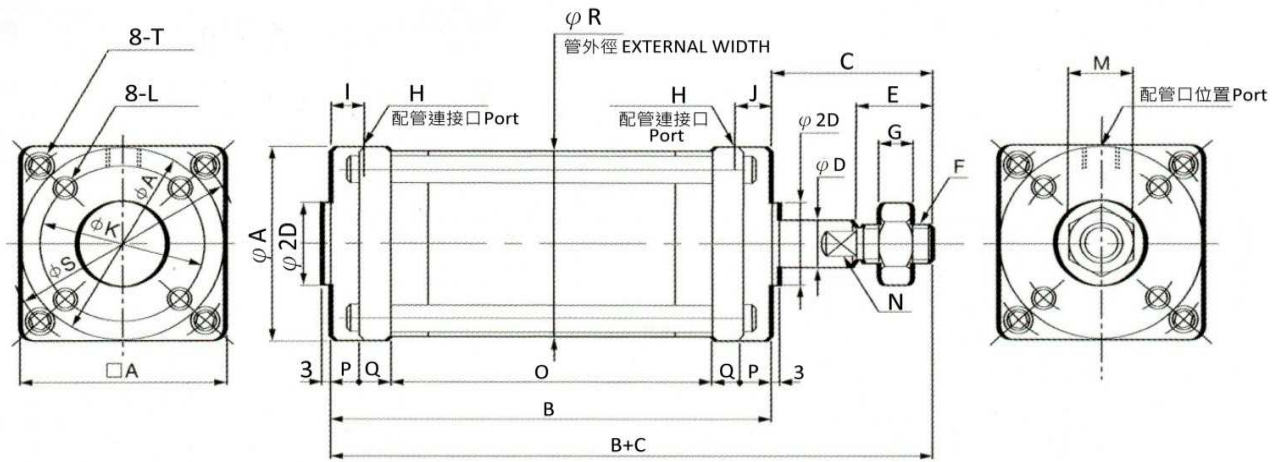
# 膜片缸 Friction Free Diaphragm Air Cylinders

## FCS 單動式推出型 Single Acting (Front Spring)



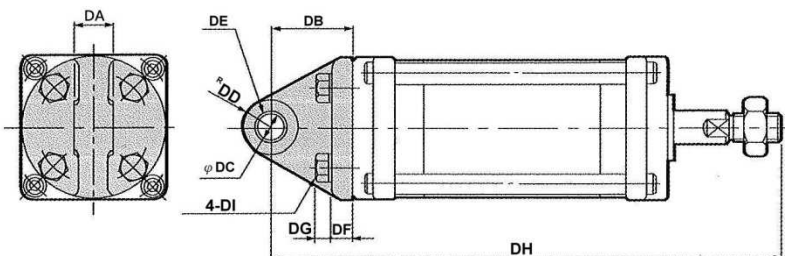
動作型式 Motion Pattern	單動式推出型(FCS)、雙動型(FCD) Single Acting (Front Spring)、Double Acting
氣缸直徑 Bore	40~63mm
衝程 Stroke	8~78mm
使用流體 Working Medium	壓縮清潔空氣(無油、無水) Compress clean air (No oil、No water)
使用壓力範圍 Working Pressure Range	0.01~0.8 Mpa (0.1~8 bar)
使用溫度範圍 Operating Temperature Range	-2~60 °C
安裝型式 Fixed Type	基本型、單耳型 Normal Type、Clevis Bracket Stud

\* 基本型尺寸圖 Normal Type - Front Spring



直徑 Bore	衝程 Stroke	A	B	C	D	E	F	G	H	I	J	K	L	M	N	O	P	Q	R	S	T
40	8	53	44	42	12	20	M10 × 1.25	6	Rc 1/8"	9	-	42	M6	17	10	14	8	7	51.5	61	M5
	24		38																		
	36		57																		
	48		75																		
50	16	63	57	45	12	20	M10 × 1.25	6	Rc 1/8"	10	-	50	M6	17	10	25	8	8	61.5	73	M6
	36		55																		
	50		77																		
	64		98																		
63	16	82	66	50	16	24	M12 × 1.5	7	Rc 1/4"	12	-	63	M8	19	13	26	9	11	78.5	94	M8
	42		65																		
	59		91																		
	78		120																		

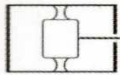
\* 單耳型尺寸圖 Clevis Bracket Stud



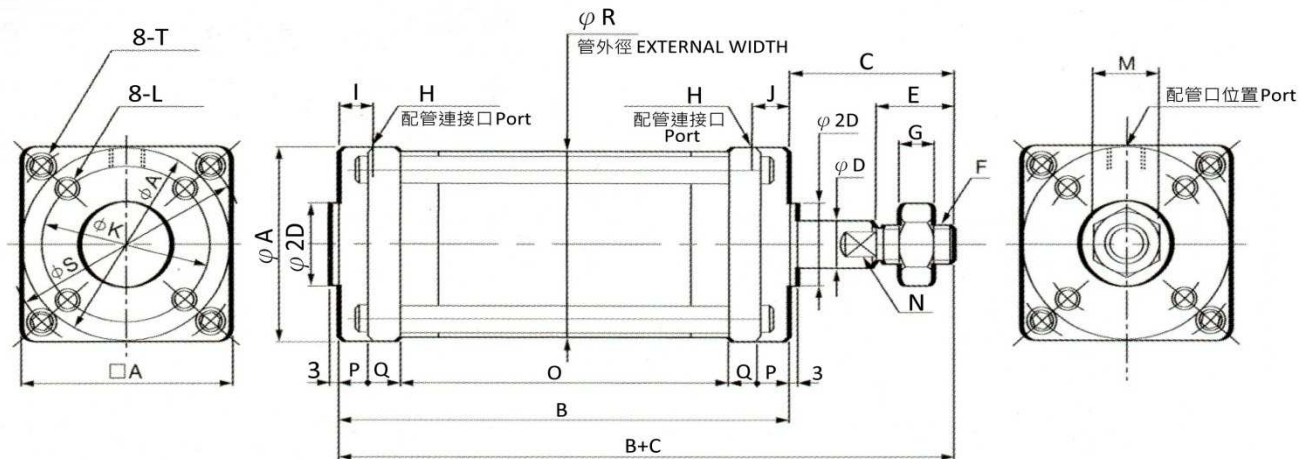
直徑 Bore	衝程 Stroke	DA	DB	DC	DD	DE	DF	DG	DH	DI	
40	8	15	30	10	14	1015	8	5.5	116	M6 × 18	
	24										140
	36										159
	48										177
50	16	15	33	10	14	1015	9	5.5	135	M6 × 18	
	36										165
	50										187
	64										208
63	16	20	38	12	15	1220	10	7.5	154	M8 × 22	
	42										193
	59										219
	78										248

\*\* DE: 軸承尺寸 Bearing size

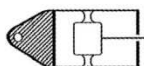
# FCD 雙動型 Double Acting



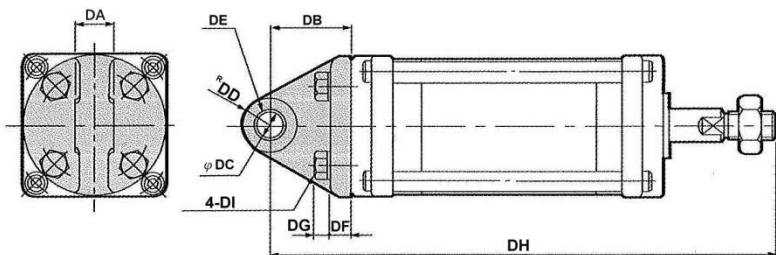
\* 基本型尺寸圖 Normal Type



直徑 Bore	衝程 Stork	A	B	C	D	E	F	G	H	I	J	K	L	M	N	O	P	Q	R	S	T
40	8	53	54	42	12	20	M10 × 1.25	6	Rc 1/8"	9	9	42	M6	17	10	24	8	7	51.5	61	M5
	24		78													48					
	36		97													67					
	48		116													86					
50	16	63	67	45	12	20	M10 × 1.25	6	Rc 1/8"	10	10	50	M6	17	10	35	8	8	61.5	73	M6
	36		97													65					
	50		119													87					
	64		141													109					
63	16	82	79	50	16	24	M12 × 1.5	7	Rc 1/4"	12	12	63	M8	19	13	39	9	11	78.5	94	M8
	42		118													78					
	59		145													105					
	78		175													135					



\* 單耳型尺寸圖 Clevis Bracket Stud



直徑 Bore	衝程 Stork	DA	DB	DC	DD	DE	DF	DG	DH	DI	
40	8	15	30	10	14	1015	8	5.5	126	M6 × 18	
	24										150
	36										169
	48										188
50	16	15	33	10	14	1015	9	5.5	145	M6 × 18	
	36										175
	50										197
	64										219
63	16	20	38	12	15	1220	10	7.5	167	M8 × 22	
	42										206
	59										233
	78										263

\*\* DE: 軸承尺寸 Bearing size