

Proportional Pressure Regulator

QKL-B1T+Air Volume Booster



- QKL-B1T Electronic Pressure Regulator

Provides an air pilot signal to the dome of the air volume booster. By controlling pressure to the top of the diaphragm, we control pressure out of the volume booster.

- Air Volume Booster

Also known as a dome-loaded or pilot-operated pressure regulator. This can be a pressure reducing valve or a back pressure valve. We have many volume boosters available that can handle different pressures, medias and flow rates.

Specifications

Type	Proportional Pressure Regulator QKL-B1T				
Input Signal	4-20mA / 0-10V / RS485				
Monitor Output	1-5V / 0-10V / 4-20mA				
Power Supply	DC24V(≤4W)				
Response	0.8S				
Type	Air Volume Booster Type 600 .Type 6100				
Model	600-CA	600-BFU	6100-EA	6500-FA	RHF-16-EPO
Output Ratio	1:1	3:1	1:1	1:1	1:1
Port	NPT 3/8"	NPT 1/4"	NPT 3/4"	NPT 1"	BSP 2"
Max. Supply Pressure(psi)	250				435
Max. Signal Pressure(psi)	150	150	150	150	250
Max. Output Pressure(psi)	150	50	150	150	250
Max. Flow(L/min)	910	910	4200	9600	53800
Exhaust capacity(Nl/min)	425	425	2264	4245	-

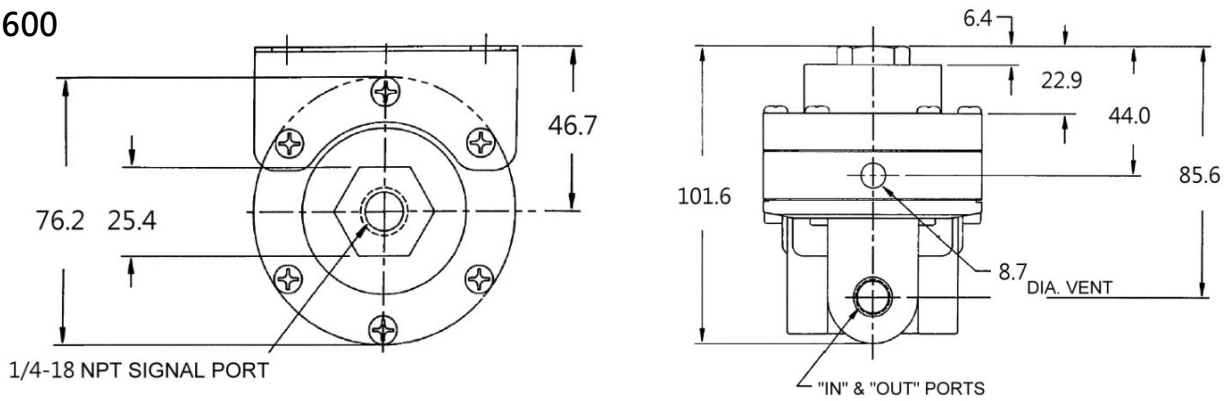
Proportional Pressure Regulator

QKL-B1T+Air Volume Booster

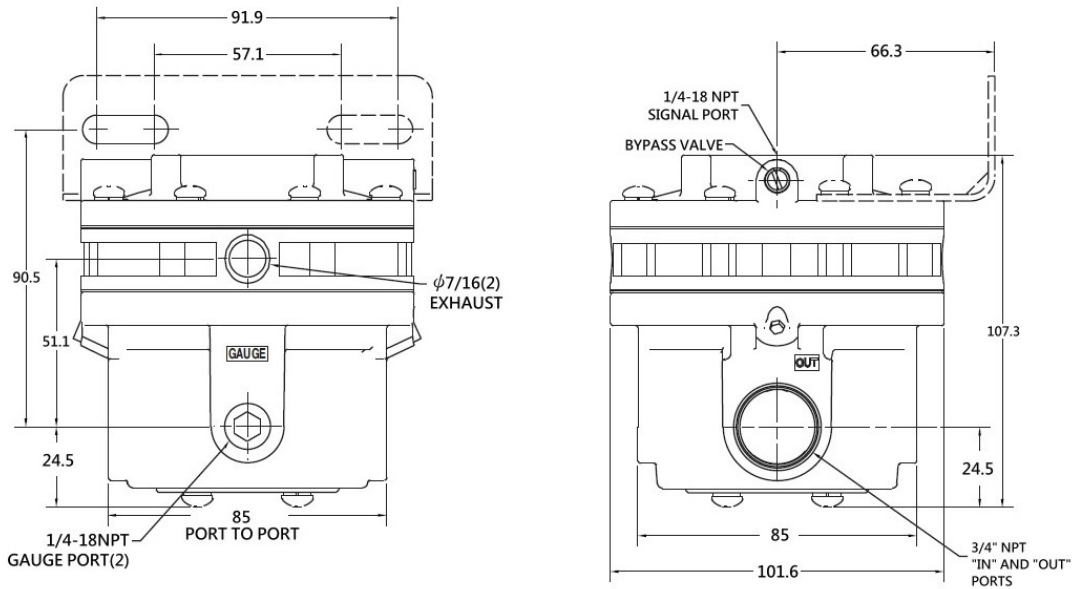


Overall Dimension

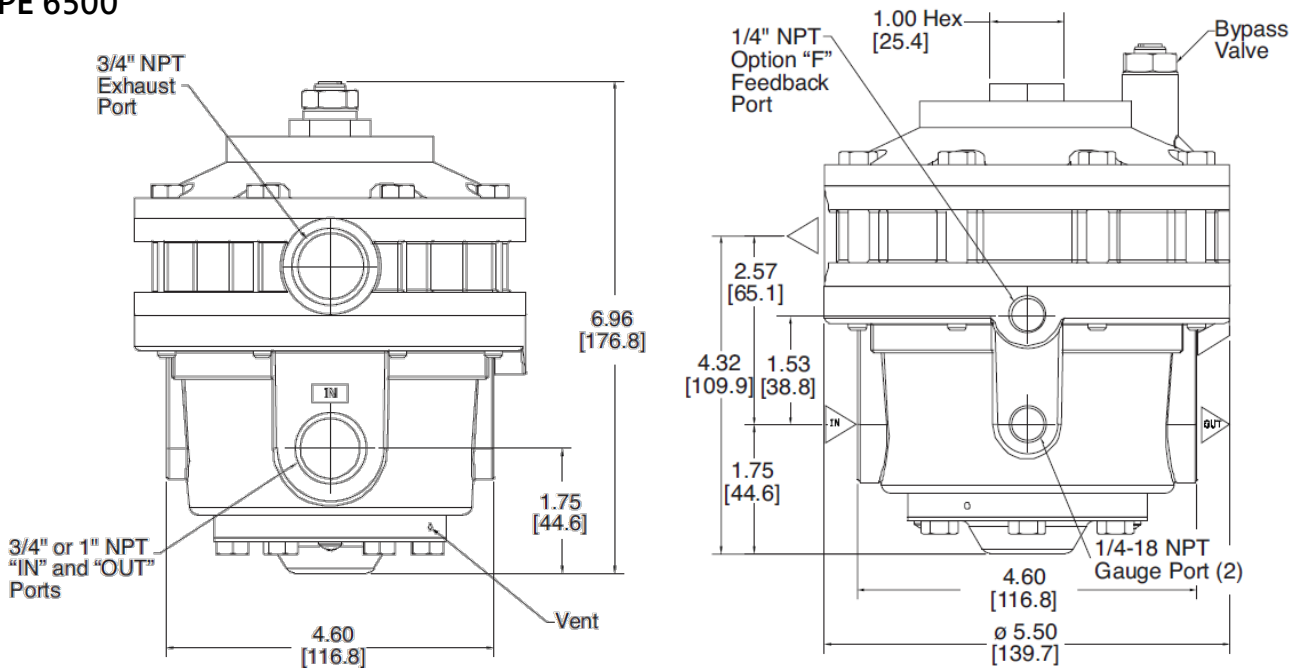
TYPE 600



TYPE 6100



TYPE 6500



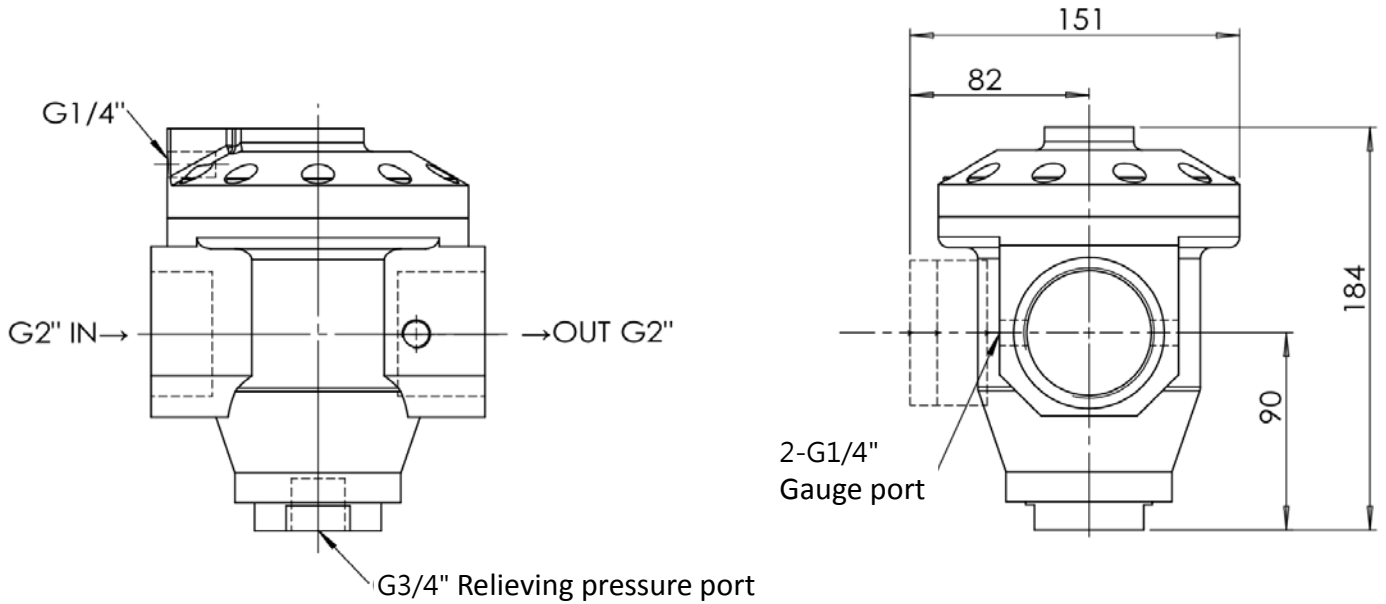
Proportional Pressure Regulator

QKL-B1T+Air Volume Booster



Overall Dimension

RHF-16-EPO



QKL-B1T

