

## 2/2 WAY DIRECT ACTING SOLENOID VALVE, G 1/4"

### COMMON FEATURES

Media: water, oil, air

Media temperature:  $-10^{\circ}\text{C} \div +130^{\circ}\text{C}$

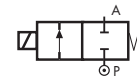
Ambient temperature:  $-10^{\circ}\text{C} \div +50^{\circ}\text{C}$

Body material: brass (CW617N EN 12165)

Operator material: stainless steel

Protection class: IP 65 (with connector and gasket)

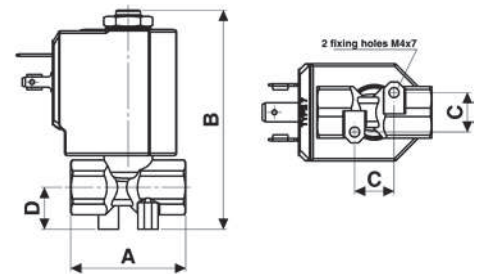
### TYPE: D249



Normally Closed



DIMENSIONS & WEIGHTS		D249
<b>G connection</b>	[ISO 228]	1/4"
<b>A</b>	[mm]	38
<b>B</b>	[mm]	72.1
<b>C</b>	[mm]	13
<b>D</b>	[mm]	13.8
<b>weight</b>	[kg]	0.18



Flow direction overseat 1 → 2

VALVE	nominal $\varnothing$	flow rate Kvs	OPD			COILS	
			min.	max. AC	max. DC	code	[Volts/Hz]
code	[mm]	[l/min]	[barg]	[barg]	[barg]	code	[Volts/Hz]
<b>D249DVD</b>	1.7	1.5	0	25	24	7250	24v DC
<b>D249DVF</b>	2.2	2.4	0	18	16	7200	24v 50/60Hz
<b>D249DVH *</b>	3.0	4.5	0	10	6	7400	110v 50Hz - 120v 60Hz
						7600	200v 50Hz - 220v 60Hz
						7700	230v 50Hz - 240v 60Hz

### D249 - FKM seal, NC -

Seal material: FKM

Coil power: AC 18v<sub>A</sub> (holding)

AC 36v<sub>A</sub> (inrush)

DC 14w

### OPTIONS

EPDM seal, temperature max. 120°C (e.g. code D249DEF)

\* Minimum batch may be required

