

2/2 WAY DIRECT ACTING SOLENOID VALVE, G 1/8"

COMMON FEATURES

Media: water, oil, air

Media temperature: $-10^{\circ}\text{C} \div +130^{\circ}\text{C}$

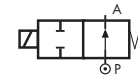
Ambient temperature: $-10^{\circ}\text{C} \div +50^{\circ}\text{C}$

Body material: brass (CW617N EN 12165)

Operator material: stainless steel

Protection class: IP 65 (with connector and gasket)

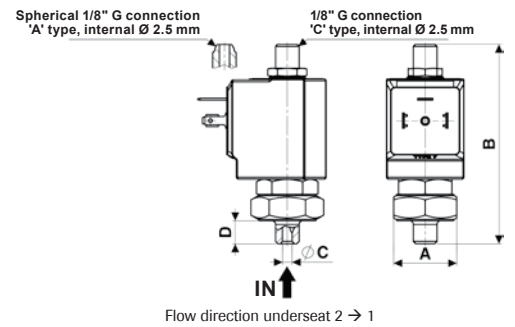
TYPE: RD213



Normally Open



DIMENSIONS & WEIGHTS		RD213
G connection	[ISO 228]	1/8"
A	[mm]	Hex 26
B	[mm]	82.5
C	[mm]	4
D	[mm]	9.5
weight	[kg]	0.1



VALVE	nominal \varnothing	flow rate Kvs	OPD			COILS	
			min.	max. AC	max. DC	code	[Volts/Hz]
code	[mm]	[l/min]	[barg]	[barg]	[barg]	code	[Volts/Hz]
RD213CVG	2.5	2.4	0	16	16	7250	24v DC
						7200	24v 50/60Hz
						7400	110v 50Hz - 120v 60Hz
						7600	200v 50Hz - 220v 60Hz
						7700	230v 50Hz - 240v 60Hz

RD213 - FKM seal, NO -

Seal material: foodgrade FKM

Coil power: AC 18v_A (holding)

AC 36v_A (inrush)

DC 14w

OPTIONS

EPDM seal, temperature max. 120°C (e.g. code RD213CEG)

Armature tube with spherical 1/8" G connection (e.g. code RD213AVG)

