

## 2/2 WAY DIRECT ACTING SOLENOID VALVE, G 1/8" - G 1/4"

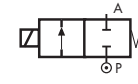
### COMMON FEATURES

Body material: brass (CW617N EN 12165)  
 Orifice material: stainless steel (1.4305 EN 10088/AISI 303)  
 Operator material: stainless steel  
 Protection class: IP 65 (with connector and gasket)

### OPTIONS

Available with body thread connection 1/8" (e.g. code D262DVH), performance ratings remain the same as D263DVH.  
**M** Manual override (e.g. code D262DVCM).

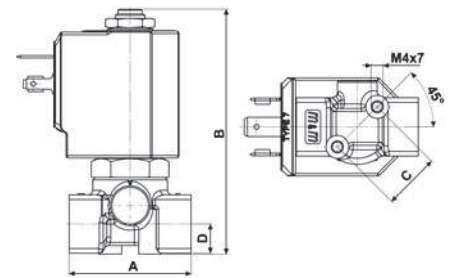
### TYPE: D262/263



Normally Closed



DIMENSIONS & WEIGHTS		D262	D263
<b>G connection</b>	[ISO 228]	1/8"	1/4"
<b>A</b>	[mm]	40	40
<b>B</b>	[mm]	77.5	77.5
<b>C</b>	[mm]	18.5	18.5
<b>D</b>	[mm]	9.5	9.5
<b>weight</b>	[kg]	0.26	0.26



Flow direction overseat 1 → 2

VALVE	nominal Ø	flow rate Kvs	OPD			COILS	
			min.	max. AC	max. DC	code	[Volts/Hz]
code	[mm]	[l/min]	[barg]	[barg]	[barg]	code	[Volts/Hz]
<b>D263DVA</b>	1.0	0.5	0	30	30	7250	24v DC
<b>D263DVC</b>	1.5	1.3	0	24	24	7200	24v 50/60Hz
<b>D263DVG</b>	2.5	3.4	0	18	16	7400	110v 50Hz - 120v 60Hz
<b>D263DVH</b>	3.0	4.5	0	15	10	7600	200v 50Hz - 220v 60Hz
<b>D263DVL</b> <sup>①</sup>	4.0	6.0	0	10	5	7700	230v 50Hz - 240v 60Hz
<b>D263DVN</b> <sup>①</sup>	5.0	7.5	0	5	2,5		
<b>D263DVP</b> <sup>①</sup>	6.0	8.0	0	3	1		

<sup>①</sup> Manual override not available for orifice > Ø 3 mm

### D262/263 - FKM seal, NC -

Media: water, oil, air  
 Media temperature: -10°C ÷ +130°C  
 Ambient temperature: -10°C ÷ +50°C  
 Seal material: foodgrade FKM  
 Coil power: AC 18vA (holding)  
 AC 36vA (inrush)  
 DC 14w

### OPTIONS

**EPDM** seal, temperature max. 120°C (e.g. code D262DEH)  
 For vacuum see TIS \*55 01\*  
 ATEX version see TIS \*11 12\*

VALVE	nominal Ø	flow rate Kvs	OPD			COILS	
			min.	max. AC	max. DC	code	[Volts/Hz]
code	[mm]	[l/min]	[barg]	[barg]	[barg]	code	[Volts/Hz]
<b>D263DLA</b>	1.0	0.5	0	9	9	7251	24v DC
<b>D263DLC</b>	1.5	1.3	0	9	9	7201	24v 50/60Hz
<b>D263DLG</b>	2.5	3.4	0	9	8	7401	110v 50Hz - 120v 60Hz
<b>D263DLH</b>	3.0	4.5	0	9	5	7601	200v 50Hz - 220v 60Hz
						7701	230v 50Hz - 240v 60Hz

### D262/263 - FILLED PTFE seal, NC -

Media: steam  
 Media temperature: -10°C ÷ +180°C  
 Ambient temperature: -10°C ÷ +70°C  
 Seal material: Sigodur (filled PTFE)  
 Coil power: AC 18vA (holding)  
 AC 36vA (inrush)  
 DC 14w

### NOTES

Seamless tube as standard

VALVE	nominal Ø	flow rate Kvs	OPD			COILS	
			min.	max. AC	max. DC	code	[Volts/Hz]
code	[mm]	[l/min]	[barg]	[barg]	[barg]	code	[Volts/Hz]
<b>D263DRB1</b>	1.2	0.7	0	200	60	72Z1	24v DC
<b>D263DRC1</b>	1.5	1.3	0	200	35	72K1	24v 50/60Hz
<b>D263DRE1</b>	2.0	2.2	0	120	25	74K1	110v 50Hz - 120v 60Hz
<b>D263DRH1</b>	3.0	4.5	0	50	11	77K1	230v 50Hz - 240v 60Hz

### D262/263 - RUBY seal, NC -

Media<sup>②</sup>: water, oil, liquids  
 Media temperature: -10°C ÷ +130°C  
 Ambient temperature: -10°C ÷ +50°C  
 Seal material: Ruby  
 Coil power: AC 25vA (holding)  
 AC 50vA (inrush)  
 DC 22w

### NOTES

Seamless tube as standard  
<sup>②</sup> Not 100% leak-proof when used with air/gases.  
 Approximate leak rate is 1,5 ml/min at max. OPD.

**ATTENTION:** When high pressure valves are supplied without a coil, their nameplates display the max. OPD of the valve when equipped with an AC (25vA) and DC (22w) coil (as shown in the table above).  
**When using alternative coil power ratings please ensure to request separately the appropriate nameplate at time of order.**