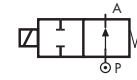


2/2 WAY DIRECT ACTING SOLENOID VALVE, G 1/4"

COMMON FEATURES

Body material: brass (CW617N EN 12165)
Orifice material: stainless steel (1.4305 EN 10088/AISI 303)
Operator material: stainless steel
Protection class: IP 65 (with connector and gasket)

TYPE: RD236

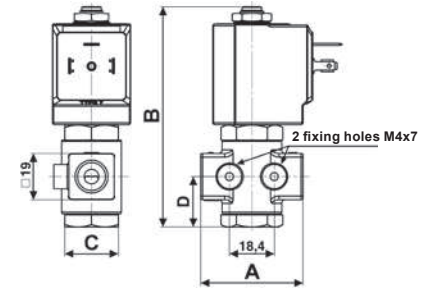


Normally Open



DIMENSIONS & WEIGHTS		RD236
G connection	[ISO 228]	1/4"
A	[mm]	47 *
B	[mm]	91
C	[mm]	Hex 22
D	[mm]	20.75
weight	[kg]	0.25

* Since July 2014



Flow direction overseat 1 → 2

VALVE	nominal Ø	flow rate Kvs	OPD			COILS	
			min.	max. AC	max. DC	code	[Volts/Hz]
code	[mm]	[l/min]	[barg]	[barg]	[barg]	code	[Volts/Hz]
RD236DV\underline{A}	1.0	0.5	0	25	25	7250	24v DC
RD236DV\underline{C}	1.5	1.3	0	20	20	7200	24v 50/60Hz
RD236DV\underline{E}	2.0	2.0	0	18	18	7400	110v 50Hz - 120v 60Hz
RD236DV\underline{G}	2.5	2.8	0	15	15	7600	200v 50Hz - 220v 60Hz
RD236DV\underline{H}	3.0	3.5	0	12	12	7700	230v 50Hz - 240v 60Hz
RD236DV\underline{M}	4.5	5.5	0	5	5		
RD236DV\underline{P}	6.0	7.5	0	2	2		

RD236 - FKM seal, NO -

Media: water, oil, air
Media temperature: -10°C ÷ +130°C
Ambient temperature: -10°C ÷ +50°C
Seal material: foodgrade FKM
Coil power: AC 18v Δ (holding)
 AC 36v Δ (inrush)
 DC 14w

VALVE	nominal Ø	flow rate Kvs	OPD			COILS class 'H' only	
			min.	max. AC	max. DC	code	[Volts/Hz]
code	[mm]	[l/min]	[barg]	[barg]	[barg]	code	[Volts/Hz]
RD236DL\underline{A}	1.0	0.5	0	9	9	7251	24v DC
RD236DL\underline{C}	1.5	1.3	0	9	9	7201	24v 50/60Hz
RD236DL\underline{E}	2.0	2.0	0	9	9	7401	110v 50Hz - 120v 60Hz
RD236DL\underline{H}	3.0	3.5	0	9	9	7601	200v 50Hz - 220v 60Hz
						7701	230v 50Hz - 240v 60Hz

RD236 - FILLED PTFE seal, NO -

Media: steam
Media temperature: -10°C ÷ +180°C
Ambient temperature: -10°C ÷ +70°C
Seal material: Sigodur (filled PTFE)
Coil power: AC 18v Δ (holding)
 AC 36v Δ (inrush)
 DC 14w

NOTES

Seamless tube as standard

VALVE	nominal Ø	flow rate Kvs	OPD			COILS high power - class 'H' only	
			min.	max. AC	max. DC	code	[Volts/Hz]
code	[mm]	[l/min]	[barg]	[barg]	[barg]	code	[Volts/Hz]
RD236DR\underline{A}1	1.0	0.5	0	180	180	72Z1	24v DC
RD236DR\underline{C}1	1.5	1.3	0	150	150	72K1	24v 50/60Hz
RD236DR\underline{E}1	2.0	2.0	0	60	60	74K1	110v 50Hz - 120v 60Hz
RD236DR\underline{G}1	2.5	2.8	0	37	37	77K1	230v 50Hz - 240v 60Hz
RD236DR\underline{H}1	3.0	3.5	0	28	28		

RD236 - RUBY seal, NO -

Media: water, oil, liquids
Media temperature: -10°C ÷ +130°C
Ambient temperature: -10°C ÷ +50°C
Seal material: Ruby
Coil power: AC 25v Δ (holding)
 AC 50v Δ (inrush)
 DC 22w

NOTES

Seamless tube as standard

Ⓢ Not 100% leak-proof when used with air/gases. Approximate leak rate is 1,5 ml/min at max. OPD.