

## 2/2 WAY PILOT OPERATED SOLENOID VALVE, G 1/4" ÷ G 1"

### COMMON FEATURES

Media: hot water and steam

Media temperature: +10°C ÷ +150°C

Ambient temperature: -10°C ÷ +70°C

Body material: brass (CW617N EN 12165)

Orifice material: stainless steel (1.4305 EN 10088/AISI 303)

Operator material: stainless steel

Operator seal material: EPM PX 70/80

Diaphragm material: PTFE

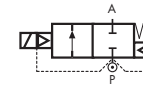
Main seal material: EPM PX 70/80

Protection class: IP 65 (with connector and gasket)

### NOTES

Seamless tube as standard

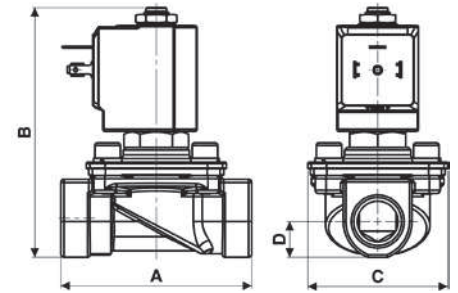
### TYPE: D887÷D892



Normally Closed



| DIMENSIONS & WEIGHTS |           | D887 | D888 | D889 | D890 | D892 |
|----------------------|-----------|------|------|------|------|------|
| <b>G connection</b>  | [ISO 228] | 1/4" | 3/8" | 1/2" | 3/4" | 1"   |
| <b>A</b>             | [mm]      | 75   | 75   | 75   | 85   | 82   |
| <b>B</b>             | [mm]      | 108  | 108  | 108  | 108  | 108  |
| <b>C</b>             | [mm]      | 55   | 55   | 55   | 55   | 55   |
| <b>D</b>             | [mm]      | 14   | 14   | 14   | 21.5 | 21.5 |
| <b>weight</b>        | [kg]      | 0.55 | 0.5  | 0.5  | 0.8  | 0.8  |



Flow direction overseat 1 → 2

| VALVE          | nominal Ø | flow rate Kvs | OPD    |         |         | COILS          |                       |
|----------------|-----------|---------------|--------|---------|---------|----------------|-----------------------|
|                |           |               | min.   | max. AC | max. DC | class 'H' only |                       |
| code           | [mm]      | [l/min]       | [barg] | [barg]  | [barg]  | code           | [Volts/Hz]            |
| <b>D887DPV</b> | 11.5      | 35            | 0.3    | 4.5     | 4.5     | 72Z1           | 24v DC                |
| <b>D888DPV</b> | 11.5      | 50            | 0.3    | 4.5     | 4.5     | 7201           | 24v 50/60Hz           |
| <b>D889DPV</b> | 11.5      | 55            | 0.3    | 4.5     | 4.5     | 7401           | 110v 50Hz - 120v 60Hz |
| <b>D890DPV</b> | 11.5      | 70            | 0.3    | 4.5     | 4.5     | 7601           | 200v 50Hz - 220v 60Hz |
| <b>D892DPV</b> | 11.5      | 75            | 0.3    | 4.5     | 4.5     | 7701           | 230v 50Hz - 240v 60Hz |
|                |           |               |        |         |         |                |                       |
|                |           |               |        |         |         |                |                       |

### D887÷D892 - PTFE seal, NC -

Coil power: AC 18vA (holding)  
AC 36vA (inrush)  
DC 22w

