



PU LINE



Innesti Rapidi NPT
NPT Couplings
Coupleurs, NPT
Kupplungen, NPT



PU 10

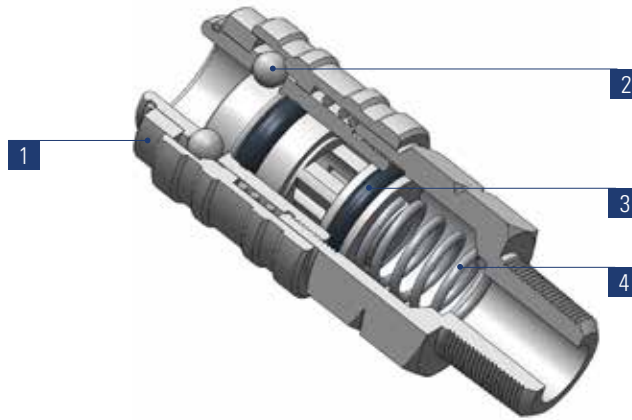
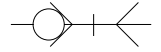
Innesto rapido multipresa

Multi socket quick coupler

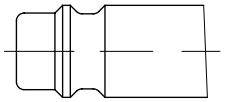
Coupleur multiprofil

Multiprofilkupplung

1	2	3	4
Corpo Body Corps Körper	Sfere Balls Billes Kugel	Guarnizioni Seals Joint d'étanchéité Dichtung	Molle Springs Ressorts Feder
Ottone UNI EN 12164 CW614N Nichelato Brass UNI EN 12164 CW614N Nickel plated Laiton UNI EN 12164 CW614N Nickelé Ms Vernickelt UNI EN 12164 CW614N	Acciaio Inox AISI 420 Stainless Steel AISI 420 Acier Inox AISI 420 Edelstahl AISI 420	NBR NBR NBR NBR	Acciaio Inox AISI 302 Stainless Steel AISI 302 Acier Inox AISI 302 Edelstahl AISI 302

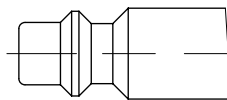


<p>Intercambiabilità con i profili Suitable with following plugs profiles Interchangeable avec les suivants profils Austauschbar mit folgenden Profilen</p>	<p>Portata Flow rate Débit Durchfluß</p> <p>(6 bar - Δp = 1bar)</p>
---	---



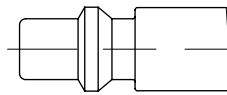
Profilo Europeo
European Profile
Profil européen
Europäisches Profil

820



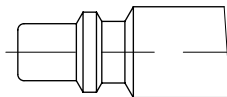
Profilo ISO 6150 B
ISO 6150 B Profile
Profil ISO 6150 B
ISO 6150 B Profil

715



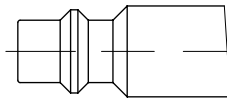
Profilo Svedese
Standard Swedisch Profile
Profil Standard Suédois
Standard schwedisches Profil

725



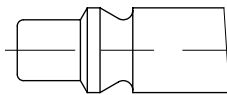
Profilo Italiano
Standard Italian Profile
Profil Standard Italien
Standard Italienisches Profil

670



Profilo MIL C4109
MIL C4109 Profile
Profil MIL C4109
MIL C4109 Profil

715



Profilo ARO 210
ARO 210 Profile
Profil ARO 210
ARO 210 Profil

705

Scala 1:1 - Scale 1:1 - Echelle 1:1 - Maßstab 1:1

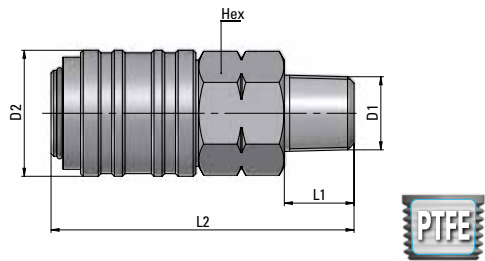
PU 10-11

Innesto rapido con filetto maschio

Male coupling

Coupleur mâle

Einschraubkupplung



Tipo	D1 NPTF	D2	L1	L2	HEX (mm)	g $\Delta\Delta$
11 00 14	1/4	23,5	13	56,5	20	100,00
11 00 38	3/8	23,5	13	56,5	20	100,00
11 00 12	1/2	23,5	17	59,5	24	135,50

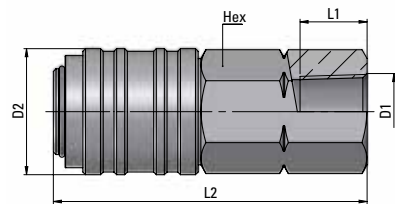
PU 10-12

Innesto rapido con filetto femmina

Female coupling

Coupleur femelle

Aufschraubkupplung



Tipo	D1 NPTF	D2	L1	L2	HEX (mm)	g $\Delta\Delta$
12 00 14	1/4	23,5	12,5	58,5	20	113,00
12 00 38	3/8	23,5	12,5	58,5	20	104,00
12 00 12	1/2	23,5	13,5	62	24	140,50